



# TK40 HD

CRAWLER CRANE

# TK40 HD

HD evolution of the TK40 crane, delivering enhanced performance and greater efficiency.





**40 t**  
MAX LOAD CAPACITY

**25,5 m**  
MAX LIFTING HEIGHT

**4 km/h**  
MAX SPEED

**37 t**  
TOTAL WEIGHT

**149 kW**  
ENGINE

The TK40 HD is a compact, easy-to-maneuver crawler crane. Electronic foot controls, a travel system managed by a Danfoss control unit, and compact dimensions allow the operator to handle the crane efficiently in confined spaces. The crawler undercarriage with extendable track width and an overall height of just 3,120 mm ensure easy loading and transport.

## BOOM

### TELESCOPIC BOOM

High-strength steel telescopic boom. 1 base section and 3 synchronized telescopic sections.

### JIB

Jib: 1.5 m.

Jib: 6 m - foldable and adjustable from 0° to 20°.

### BOOM EXTENSION CYLINDER

One single-stage cylinder.

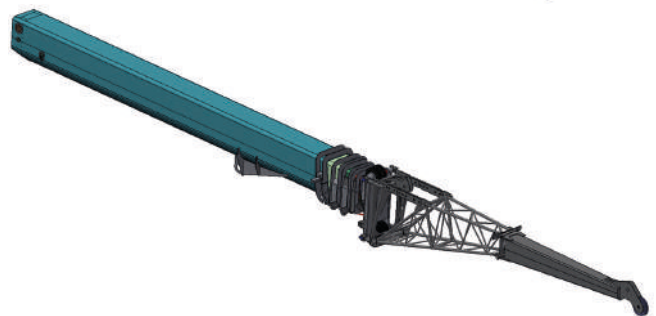
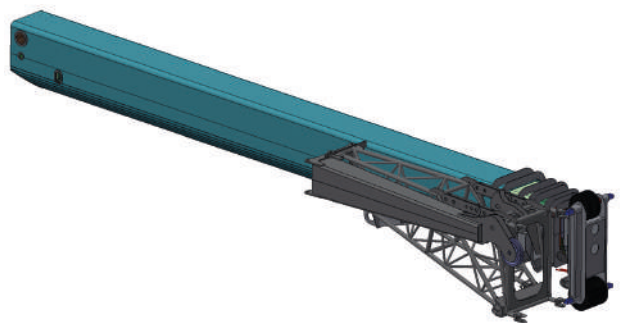
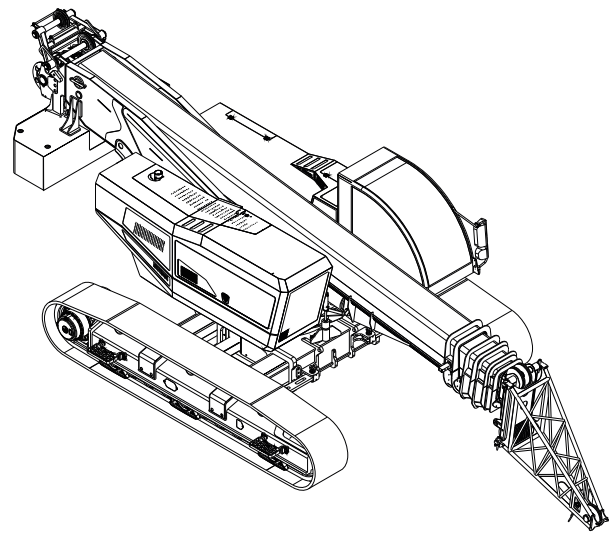
### BOOM LENGHT

25 m

### PICK & CARRY

- 32 ton at 3 m

- 25,5 ton at 4 m





## CAB

### DRIVING

Ergonomic driving system with electronic foot controls. *Dual Path* mode with active counter-rotation. Automatic/manual *Park Brake* management.

### OPERATOR'S CAB

Cab equipped with a hinged door. Front and upper glass with windshield wiper. Corrosion-resistant paint. Wide visibility for various working conditions. Opening front window, openable skylight, and sunshade for the skylight.

### COMFORT

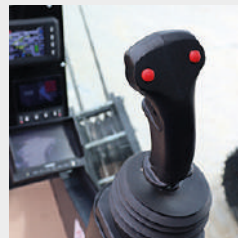
Air conditioning, heating, and an air-suspended seat. Safety belt. USB port. Ample cab interior lighting.



Ergonomic driving with electronic foot controls



Clear and intuitive instrument panel



Control joystick for operating functions (right)



Control joystick for operating functions (left)

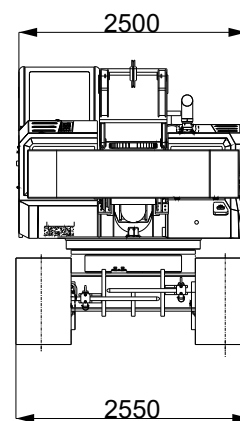
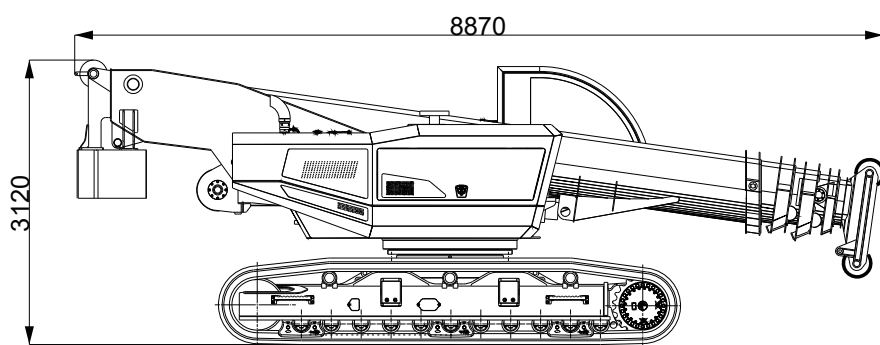
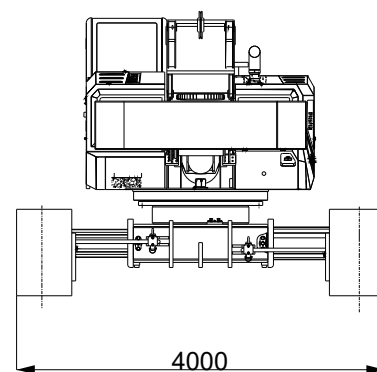
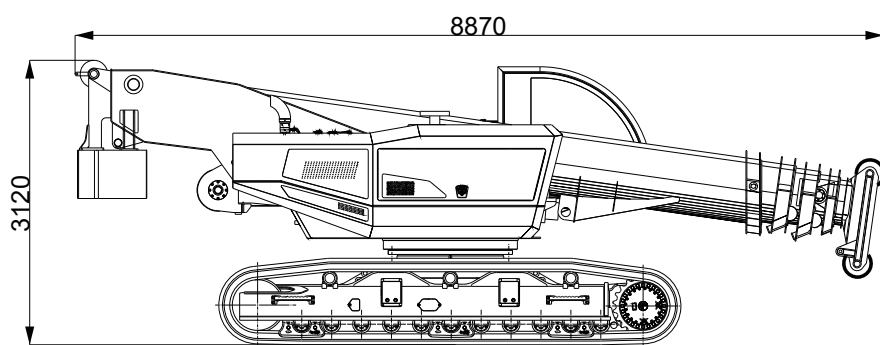


Comfortable cab equipped with air conditioning, heating, air-suspension seat



TECHNICAL FEATURES	Maximum load capacity	40	t
	Capacity	40	t
	Maximum lifting height	25,5	m
OPERATING SPEED	Winch speed	67/154	m/min
	Length and diameter of winch ropes	L 160 Ø 14	m - mm
	Boom lifting speed	55	s
	Boom extension speed	100	s
	Upper structure rotation speed	2	giri/min
	Maximum speed	4	km/h
	Maximum slope	87,8	%
CRANE	Emissions	EU 2016/1628	
	Total weight	37	t
DIMENSIONS	Total size	8.870x2.550x3.120	mm
	Boom length	25	m
	Boom tilt	-2 +80	°

## DIMENSIONS



## EQUIPMENT

### UNDERCARRIAGE

Undercarriage	Hydraulically extendable (2550 mm closed, 4000 mm extended). Tracks with 600 mm pads.
Travel	Hydraulic travel drive controlled by a Danfoss control unit. Two pumps and two closed-circuit motors allow it to reach 4 km/h. The machine is equipped with an anti-dumping filter to absorb the oscillations on the pedal and on the steering wheel during the work phase.
Electrical system	CAN Bus data transmission. 24 Volt direct current.

### DRIVING

Driving	Ergonomic driving system with electronic foot controls. Dual Path mode with active counter-rotation. Automatic/manual Park Brake management.
Operator's cab	Cab equipped with a hinged door. Front and upper glass with windshield wiper. Corrosion-resistant paint. Wide visibility for various working conditions. Opening front window, openable skylight, and sunshade for the skylight.
Comfort	Air conditioning, heating, and an air-suspended seat. Safety belt. USB port. Ample cab interior lighting.
Lighting	- 2 integrated lights at the front section of the cab roof - 1 LED spotlight on the right side of the upper carriage

### BOOM

Telescopic boom	High-strength steel. 4-section boom: 1 base section + 3 synchronized telescopic sections.
Boom extension cylinder	One single-stage cylinder.
Boom length	25 m

### LIFTING

Pick & Carry	- 32 ton at 3 m - 25,5 ton at 4 m
Travel and lifting	Lifting capacity up to 1,000 kg with free track width. Dedicated lifting program for equipment handling and transfer.





## EQUIPMENT

### UPPER STRUCTURE

Chassis	Anti-torsion welded structure, in high-strength steel.
Rotation	Continuous 360° using axial piston hydraulic motor. Planetary gearbox with internal toothed fifth wheel and double row of balls. Multiple disc negative brake.
Control	Hydraulically operated manipulators with the possibility of simultaneous proportional maneuvers.
Lifting winch	Variable displacement axial piston engine. Lifting drum with integrated planetary gearbox and parking brake with multiple discs. Block valve and descent control. Cable gland to improve the winding of the rope on the drum. Direct pull 3000 kg.
Hydraulic system	Open circuit system with axial piston hydraulic pumps. Proportional hydraulic distributors with load sensing power regulation. Possibility of performing multiple maneuvers simultaneously. Heat exchanger for oil cooling. Oil filtering through 1 cartridge filter on the return circuit.
Hydraulic oil tank	450 l
Electrical system	24 V power supply. CAN Bus vehicle management network. 2 batteries, each with 143Ah.
Safety devices	Electronic load moment indicator. Work area limitation. Telematics system with data connection and remote diagnostics. ISO-compliant warning and safety signs. Portable fire extinguisher.
Ballast	In one piece with a weight of 8 tons on the upper structure and 2 pieces of 2 tons on the carriage
Cameras	- 2 cameras located on the rear to increase visibility during tight maneuvers - 1 camera to monitor the rope winding on the winch

### ENGINE

Engine	Cummins B 4.5 Stage V- Tier 4f- 149 kW@2200rpm.
Diesel tank	300 l
Def tank	38 l

## PRELIMINARY LOAD CHART

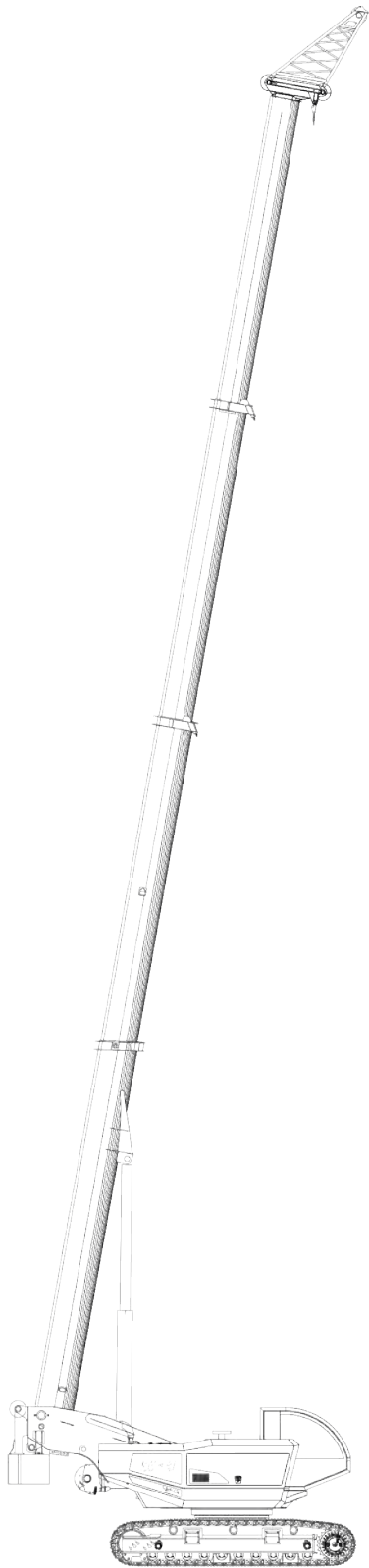
OVER FULL RANGE (360°) – Crawlers fully extended – Slope 0.5° –  
CWT 8,000 kg + 4,000 kg – Travel speed 0.1 m/s

high angle	54°	63°	71°	77°	80°
low angle	0°	0°	0°	0°	0°

RADIUS (m)	BOOM LENGTH (m)				
	8,05	12,33	16,70	20,88	25,15
2	40.000	-	-	-	-
3	32.000	15.700	15.000	14.600	9.600
4	25.500	15.700	15.500	14.000	9.300
5	22.000 (4,6 m)	15.700	15.500	13.100	8.700
6		15.500	14.400	12.000	8.000
7		12.500	11.900	10.900	7.300
8		10.300	10.200	9.400	6.700
9		8.900 (8,88 m)	8.700	8.200	6.000
10			7.400	7.200	5.500
11			6.500	6.400	5.100
12			5.700	5.700	4.800
13			5.100	5.000	4.500
14			5.000 (13,2 m)	4.500	4.300
15				4.000	4.000
16				3.600	3.600
17				3.300	3.300
18				3.200 (17,45 m)	3.000
19					2.700
20					2.500
21					2.300
22					2.200 (21,65 m)
23					
24					
25					
Reeving	12	6	6	6	4
1a	0%	25%	50%	75%	100%
2a	0%	25%	50%	75%	100%
3a	0%	25%	50%	75%	100%
Maximum ground pressure daN/cm <sup>2</sup>	-	-	-	-	-

**Note: telescopic extension under load is permitted with reduced loads compared to the rated load charts**

Longitudinal leveling permitted	0,5°
Lateral leveling permitted	0,5°
Crawler tracks	extended
Travel speed	0,1 m/s
Upper structure working angle	360°
Direct line pull of main winch	3.500 kg
Direct line pull of auxiliary winch	1.500 kg
Ballast (8,000 kg on upper structure + 4,000 kg on undercarriage)	12.000 kg



## OPTIONAL EXTRAS

- Auxiliary winch - Ø12 rope - 5-ton hook block
- Jib: 1.5 m
- Jib: 6 m - foldable and adjustable from 0° to 20°
- Tilting cab
- Industry 4.0 kit
- Camera kit / additional lights (standard: 2 rear lights and 1 on main winch)
- Electric fuel pump
- Radio remote control for loading and unloading
- Custom paint finish
- Rubber track pads
- AI camera
- Rope containment kit
- Toolbox on undercarriage
- Steering wheel control for crawler travel



It is possible to request customized components or modifications to be evaluated by our engineering department.

For example:

- TMA winches
- Grammer seat
- Sliding cab door
- Rope diameter different from standard

All data, technical characteristics and information reported in this document are for informational purposes and are subject to change without any prior notice requirement. All specifications described do not constitute a guarantee since the performance of the machine varies depending on use.

Machine illustrations may contain optional and additional equipment. The dimensional data refers to average reference measurements indicated for informational purposes only.

The commissioning of the machine and its correct use require compliance with the use and maintenance manual.

The weights of hooks, blocks and all lifting accessories are part of the load and must be deducted from the loads indicated.

Please contact TeknoGRC for more information regarding optional and additional equipment.

## OUR RANGE



TK20



TK30



TK40



TK40 HD



TK45 LS



TK35 T



CG 2040



TKC150-5

**Do you need a custom crane?** We make machinery on request specific to the customer's needs.  
For more information, contact us at the e-mail address [info@teknogrc.it](mailto:info@teknogrc.it)



TEKNO GRC s.r.l.

Via Vecchia Fornace, 31  
24050 Bariano (BG)

+39 0363 958311  
info@teknogrc.it

[www.teknogrc.it](http://www.teknogrc.it)