



TK45 LS

CRAWLER CRANE

TK45 LS

Ideal for the installation and maintenance of high-altitude structures such as pylons, power lines, cableways and antennas





- ☑ the TK45 LS is suitable for the installation of high, medium and low voltage pylons
- ☑ the powerful Danfoss motors installed on the crawler chassis allow reaching work areas that are inaccessible to common lifting equipment
- ☑ the telescopic beam stabilization system allows lifting loads in the most difficult working conditions
- ☑ the three jib inclinations offer the possibility of lifting loads in restricted spaces without the aid of special equipment



45 t
MAX LOAD CAPACITY

42 m
MAX LIFTING HEIGHT

58 m
MAX LIFTING HEIGHT WITH JIB

4 km/h
MAX SPEED

32 t
TOTAL WEIGHT

149 kW
ENGINE

The TK45 LS is a compact crawler crane with an extendable beam stabilization system and independently controlled hydraulic jacks. Its steering wheel, its travel system managed by a Danfoss control unit and its small size allow the operator to maneuver the crane in restricted areas.

The self-levelling hydraulic stabilization jacks are easily operated from the machine. The foldable jib allows the maximum loading height of 58 m to be reached, while the tilting cab offers the operator a complete view of the lifted load.

The supplied radio remote control facilitates loading and unloading of the crane. Modern exhaust gas treatment systems ensure very low emissions.

BOOM

TELESCOPIC BOOM

Telescopic boom in high-strength steel. 1 base section, 1 independent telescopic section and 3 synchronized telescopic sections.

JIB

Adjustable in 3 positions (0°-10°-20°).

L= 9,930mm foldable into 2 halves.

Can be used in the fully extended version or in the reduced version.

BOOM EXTENSION CYLINDER

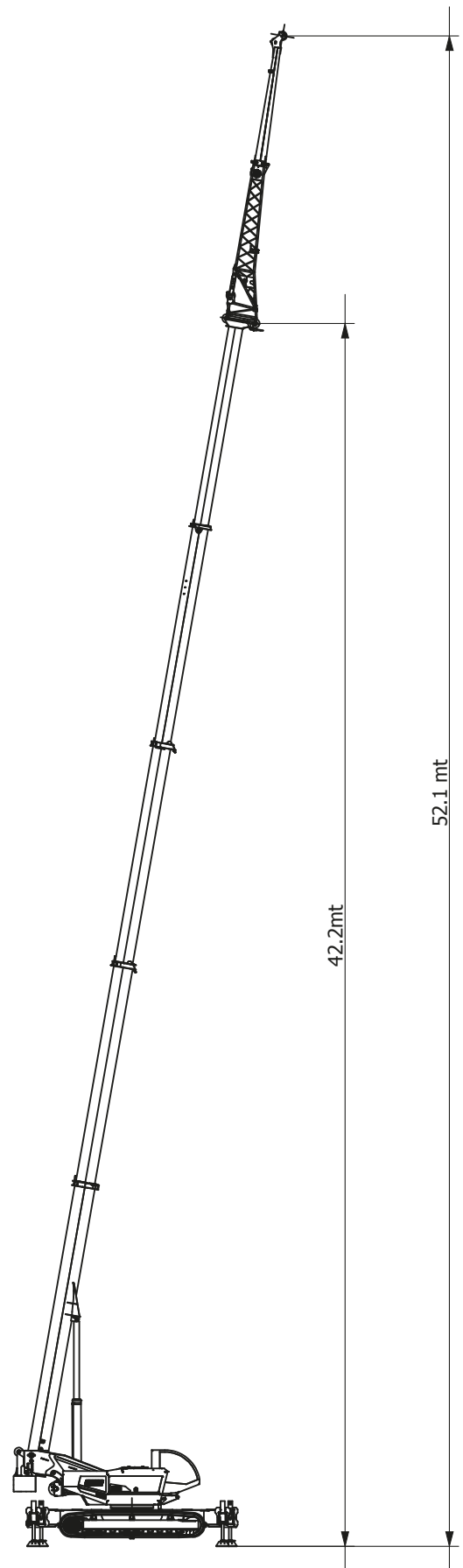
Single two-stage cylinder.

BOOM LENGTH WITH JIB

50 m

PICK & CARRY

Lifting up to 16.000 kg and 4 km/h.





CAB

DRIVING

Ergonomic driving position with steering wheel and accelerator pedal. Dual Path mode with active counter-rotation. Automatic/manual Park Brake management.

OPERATOR'S CAB

Cab adjustable to 30°. Cab with great visibility, comfortable and equipped with sliding windows. Front and upper glass with wiper. Corrosion resistant paint. Wide visibility for different working conditions.

COMFORT

Air conditioning, heating and suspension seat. Seat belt. Ample lighting in the operator's cab.

RADIO REMOTE CONTROL

Radio remote control for safe loading and unloading of the crane.



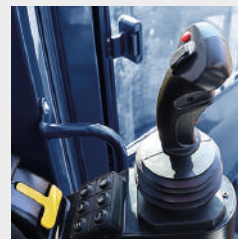
Steering wheel and accelerator pedal



Industry 4.0 display



Clear and intuitive instrument panel



Control joystick for operating functions

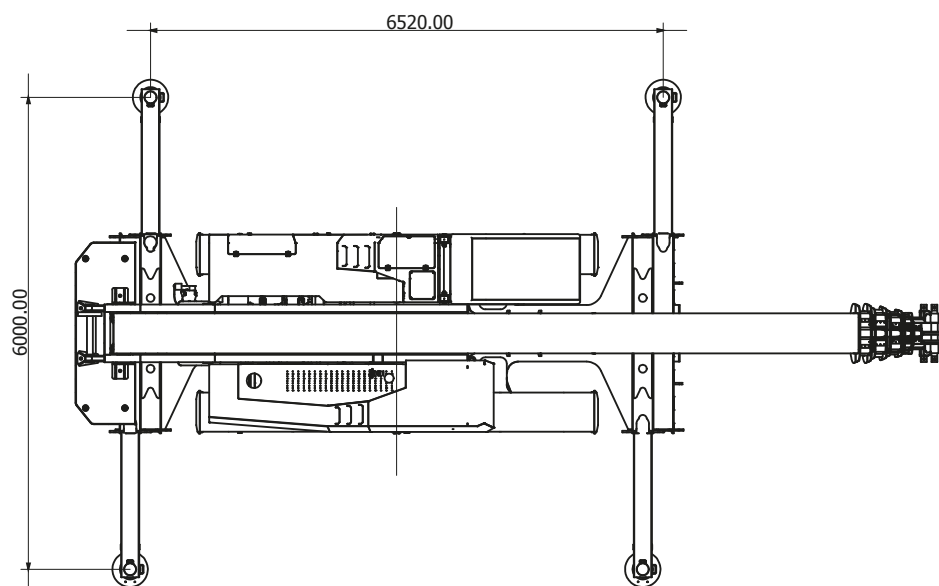
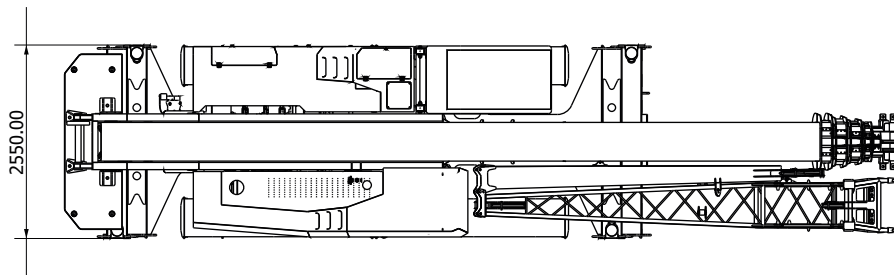
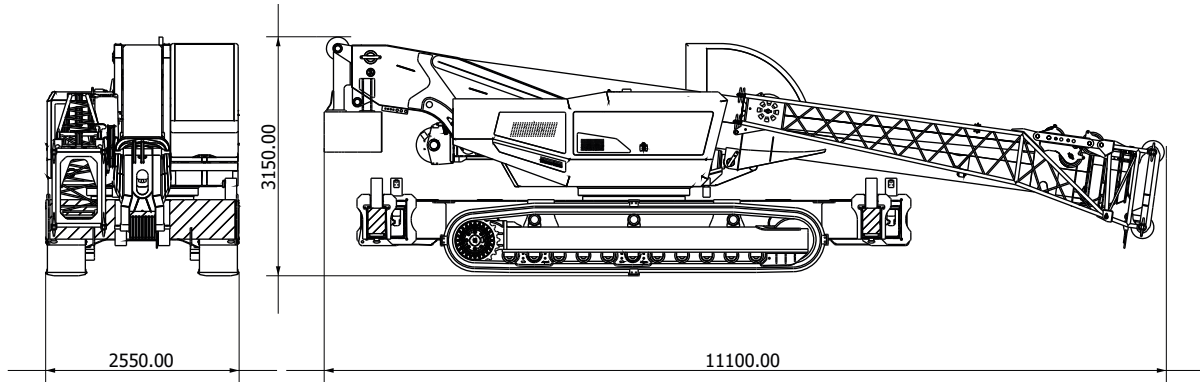


Radio remote control (optional)



TECHNICAL FEATURES - OPERATING SPEED - DIMENSIONS	Maximum load capacity	45	t
	Maximum lifting height	42	m
	Maximum lifting height with jib	58	m
	Winch speed	67/154	m/min
	Length and diameter of winch ropes	L 200 Ø 13	m - mm
	Boom lifting speed	55	s
	Boom extension speed	120	s
	Upper structure rotation speed	1	r/min
	Maximum speed	4	km/h
	Maximum slope	87.8	%
	Emissions	EU 2016/1628	
	Total weight	32	t
	Total size	11,100x2,550x3,150	mm
	Boom length	40	m
Boom length with jib	50	m	
Boom tilt	-2 +80	°	

DIMENSIONS



EQUIPMENT

UNDERCARRIAGE

Undercarriage	Pair of tracked semi-trucks with track width of 500mm. Stabilization with extensible beams and hydraulic jacks, length=6,520 mm and width=6,000 mm.
Travel	Hydraulic travel drive controlled by a Danfoss control unit. Two pumps and two closed-circuit motors allow it to reach 4 km/h. The machine is equipped with an anti-dumping filter to absorb the oscillations on the pedal and on the steering wheel during the work phase.
Electrical system	CAN Bus data transmission. 24Volt direct current.

OPERATING FEATURES

Driving	Ergonomic driving position with steering wheel and accelerator pedal. Dual Path mode with active counter-rotation. Automatic/manual Park Brake management.
Operator's cab	Cab adjustable to 30°. Cab with great visibility, comfortable and equipped with sliding windows. Front and upper glass with wiper. Corrosion resistant paint. Wide visibility for different working conditions.
Comfort	Air conditioning, heating and suspension seat. Seat belt. Ample lighting in the operator's cab.
Radio remote control	Radio remote control for safe loading and unloading of the crane.

BOOM

Telescopic boom	High-strength steel. 1 base element, 1 independent extension and 3 synchronized extensions.
Jib	Adjustable in 3 positions (0°-10°-20°). L= 9,930mm foldable into 2 halves. Can be used in the fully extended version or in the reduced version.
Boom extension cylinder	Single two-stage cylinder.
Boom length	40 m
Pick & Carry	Lifting up to 16,000 kg and 4 km/h.





EQUIPMENT

UPPER STRUCTURE

Chassis	Anti-torsion welded structure, in high-strength steel.
Rotation	Continuous 360° using axial piston hydraulic motor. Planetary gearbox with internal toothed fifth wheel and double row of balls. Multiple disc negative brake.
Control	Hydraulically/electrically operated manipulators with the possibility of simultaneous proportional maneuvers.
Lifting winch	Axial piston variable displacement engine. Lifting drum with integrated planetary gearbox and parking brake with multiple discs. Block valve and descent control. Cable gland to improve the winding of the rope on the drum.
Hydraulic system	Open circuit system with axial piston hydraulic pumps. Proportional hydraulic distributors with load sensing power regulation. Possibility of performing multiple maneuvers simultaneously. Heat exchanger for oil cooling. Oil filtering through 1 cartridge filter on the return circuit.
Stabilization	With self-levelling performed with 4 independently controlled hydraulic jacks.
Hydraulic oil tank	450 l
Electrical system	24 V power supply. CAN Bus vehicle management network. 2 batteries, each with 143Ah.
Safety devices	Electronic load limiter with indication of boom tilt, boom length, lifted load, maximum liftable load. Limit switches. Safety valves on all hydraulic functions.
Ballast	In a single piece with a weight of 1.5 tons.
Cameras	1 camera located on the rear side to increase visibility during more restricted maneuvers. 1 camera for supervising the winding of the rope on the winch.

ENGINE

Engine	Cummins B 4.5 Stage V- Tier 4f- 149 kW@2200rpm.
Diesel tank	300 l
Def tank	38 l

TABLE 01

OVER FULL RANGE (360°). Main boom. Outriggers 100% - CWT 1500kg

RADIUS (m)	BOOM LENGHT								
	10,4	13,7	17,0	20,8	24,5	28,3	32,0	35,8	39,5
2,5	34.000	20.000	9.800	9.700	9.350				
3,0	30.000	19.000	10.000	9.850	9.500	9.050			
3,5	28.000	18.000	10.250	10.050	9.700	9.200	6.400		
4,0	23.000	16.500	10.550	10.300	9.900	9.350	6.400	5.000	
4,5	20.000	16.250	10.800	10.550	10.050	9.500	6.400	5.000	
5,0		16.000	11.150	10.850	10.300	9.700	6.400	5.000	4.000
6,0		13.000	12.100	11.500	10.850	10.250	6.400	5.000	4.000
7,0		11.000	12.100	11.100	11.000	10.000	6.400	5.000	4.000
8,0		8.350	9.550	10.200	9.950	9.000	6.400	5.000	4.000
9,0		6.500	7.600	8.400	8.000	7.700	6.400	5.000	4.000
10,0		5.200	6.250	6.950	6.600	6.300	6.400	5.000	4.000
11,0			5.200	5.900	5.550	5.250	5.700	5.000	4.000
12,0			4.500	5.050	4.700	4.450	4.900	4.650	4.000
13,0				4.300	4.050	3.800	4.200	4.000	3.500
14,0				3.600	3.500	3.250	3.700	3.450	3.000
15,0				3.100	3.050	2.800	3.250	3.000	2.500
16,0					2.700	2.450	2.850	2.650	2.000
17,0						2.100	2.500	2.300	1.800
18,0						1.800	2.300	2.000	1.600
19,0						1.500	2.000	1.800	1.550
20,0							1.800	1.500	1.450
21,0							1.500	1.350	1.200
22,0							1.200	1.100	1.100
23,0							1.000	900	850
25,0								600	550
27,0									400
28,0									
Reeving	16	10	6	6	6	6	4	4	4
Q _{MAX}	45,4	26,7	16,5	16,5	16,5	16,5	11,2	11,2	11,2
1a	0%	50%	100%	100%	100%	100%	100%	100%	100%
2a	0%	0%	0%	17%	33%	50%	67%	83%	100%
3a	0%	0%	0%	17%	33%	50%	67%	83%	100%
4a	0%	0%	0%	17%	33%	50%	67%	83%	100%
Stroke I [mm]	0	3325	6650	6650	6650	6650	6650	6650	6650
Stroke II [mm]	0	0	0	1250	2500	3750	5000	6250	7500
Maximum permissible wind speed v = 49 km/h									

TABLE 01

OVER FULL RANGE (360°). Main boom. Outriggers 100% - CWT 1500kg

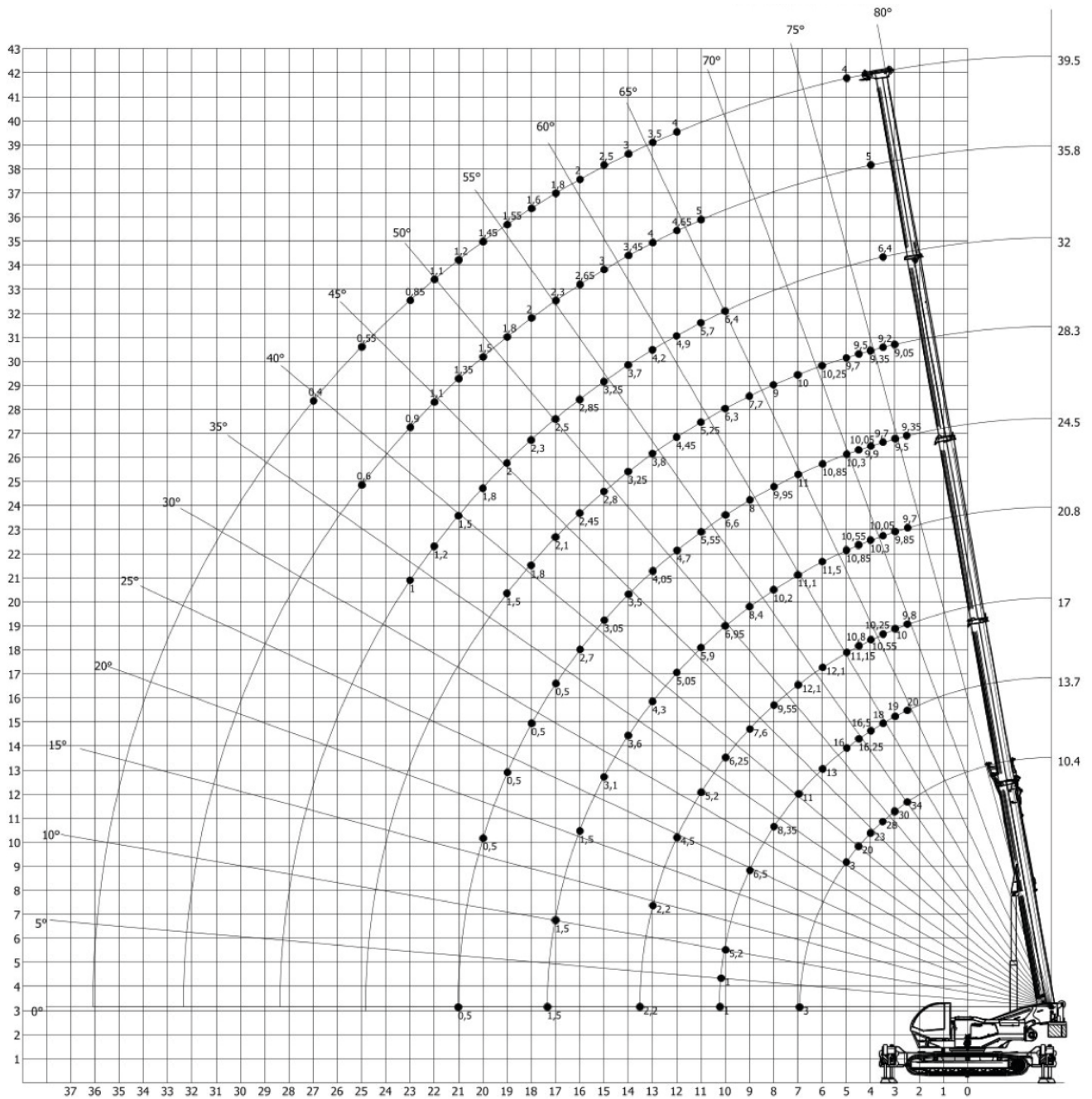


TABLE 02

ON FRONT (0°). Main boom. Outriggers 100% - CWT 1500kg

RADIUS (m)	BOOM LENGHT								
	10,4	13,7	17,0	20,8	24,5	28,3	32,0	35,8	39,5
2,0	45.000								
2,5	40.000	25.000	9.800	9.700	9.350				
3,0	37.000	23.000	10.000	9.850	9.500	9.050			
3,5	34.000	22.000	10.250	10.050	9.700	9.200	6.400		
4,0	30.000	21.000	10.550	10.300	9.900	9.350	6.400	5.000	
4,5	25.000	20.000	10.800	10.550	10.050	9.500	6.400	5.000	
5,0		16.000	11.150	10.850	10.300	9.700	6.400	5.000	4.000
6,0		14.000	12.100	11.500	10.850	10.250	6.400	5.000	4.000
7,0		12.000	12.100	11.100	11.000	10.000	6.400	5.000	4.000
8,0		9.000	9.550	10.200	9.950	9.000	6.400	5.000	4.000
9,0		7.500	7.600	8.400	8.000	7.700	6.400	5.000	4.000
10,0		6.000	6.250	6.950	6.600	6.300	6.400	5.000	4.000
11,0			6.000	6.100	5.700	5.250	5.700	5.000	4.000
12,0			5.000	5.300	5.200	4.450	4.900	4.650	4.000
13,0				4.600	4.500	3.800	4.200	4.000	3.500
14,0				4.200	4.100	3.250	3.700	3.450	3.000
15,0				3.200	3.400	2.800	3.250	3.000	2.500
16,0					3.000	2.450	2.850	2.650	2.000
17,0						2.100	2.500	2.300	1.800
18,0						1.800	2.300	2.000	1.600
19,0						1.500	2.000	1.800	1.550
20,0							1.800	1.500	1.450
21,0							1.500	1.350	1.200
22,0							1.200	1.100	1.100
23,0							1.000	900	850
25,0								600	550
27,0									400
Reeving	16	10	6	6	6	6	4	4	4
Q _{MAX}	45,4	26,7	16,5	16,5	16,5	16,5	11,2	11,2	11,2
1a	0%	50%	100%	100%	100%	100%	100%	100%	100%
2a	0%	0%	0%	17%	33%	50%	67%	83%	100%
3a	0%	0%	0%	17%	33%	50%	67%	83%	100%
4a	0%	0%	0%	17%	33%	50%	67%	83%	100%
Stroke I [mm]	0	3325	6650	6650	6650	6650	6650	6650	6650
Stroke II [mm]	0	0	0	1250	2500	3750	5000	6250	7500

TABLE 02

ON FRONT (0°). Main boom. Outriggers 100% - CWT 1500kg

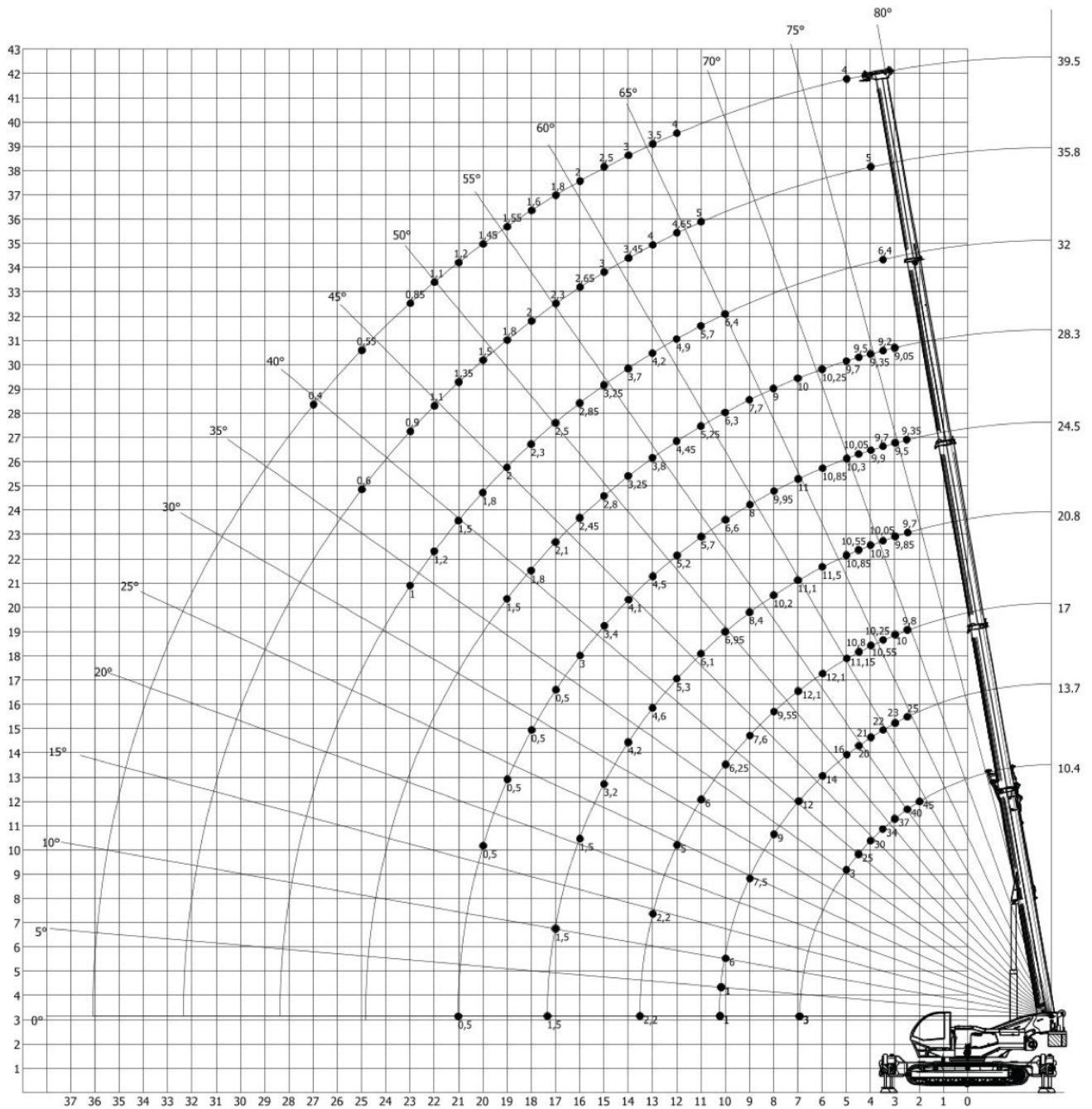


TABLE 03

ON IDLE WHEEL - Main boom - On crawlers - travelling speed 4 km/h - slope 3° - WITH & WITHOUT CWT 1500kg

RADIUS (m)	BOOM LENGHT							
	10,4	13,7						
2,5	16.000	11.900						
3,0	12.700	10.000						
3,5	12.000	8.500						
4,0	9.900	7.200						
4,5	8.100	6.100						
5,0		5.100						
6,0		3.800						
7,0		2.800						
8,0		2.000						
9,0		1.500						
10,0		1.000						
11,0								
12,0								
13,0								
14,0								
15,0								
16,0								
17,0								
18,0								
19,0								
20,0								
21,0								
22,0								
23,0								
25,0								
27,0								
28,0								
Reeving	6	6						
Q _{MAX}	16,5	16,5						
1a	0%	50%						
2a	0%	0%						
3a	0%	0%						
4a	0%	0%						
Stroke I [mm]	0	3325						
Stroke II [mm]	0	0						
Maximum permissible wind speed v = 49 km/h								

TABLE 03

ON IDLE WHEEL - Main boom - On crawlers - travelling speed 4 km/h - slope 3° - WITH & WITHOUT CWT 1500kg

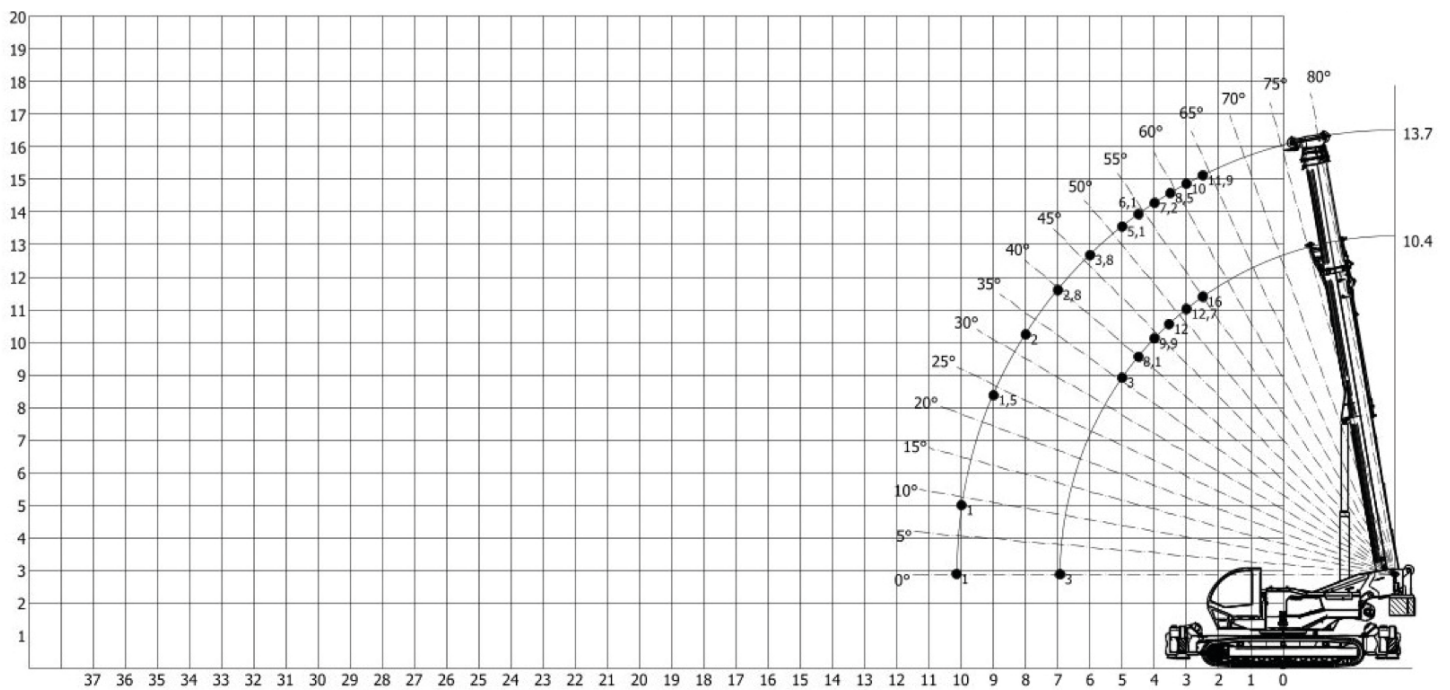


TABLE 04

Main boom + Jib - JIB OFFSET 0°/10°/20° - BOOM 35,8/39,5 m - OVER FULL RANGE (360°). Outriggers 100% -
Jib length 9,93m - CWT 1500 kg

RADIUS (m)	JIB OFFSET 0°		JIB OFFSET 10°		JIB OFFSET 20°	
	BOOM LENGHT					
	35,8	39,5	35,8	39,5	35,8	39,5
8,0						
9,0	2.000					
10,0	2.000	2.000				
11,0	2.000	2.000	2.000			
12,0	2.000	2.000	2.000	2.000		
13,0	2.000	2.000	2.000	2.000	1.900	
14,0	2.000	2.000	2.000	2.000	1.800	1.700
15,0	2.000	2.000	2.000	1.900	1.700	1.600
16,0	2.000	2.000	1.900	1.800	1.600	1.500
17,0	2.000	2.000	1.800	1.700	1.500	1.400
18,0	2.000	1.800	1.700	1.600	1.400	1.300
19,0	2.000	1.700	1.600	1.500	1.300	1.200
20,0	2.000	1.500	1.500	1.400	1.200	1.100
21,0	1.800	1.300	1.400	1.300	1.100	1.000
22,0	1.600	1.100	1.300	1.200	1.000	950
23,0	1.300	950	1.200	1.000	950	900
24,0	1.200	800	1.100	900	850	800
25,0	1.000	700	1.000	800	750	700
26,0	800	600	800	700	650	600
27,0	700	500	700	600	600	500
28,0	500	400	600	500	500	400
29,0			500	400	400	300
30,0			400	300	300	250
31,0						
Reeving	1	1	1	1	1	1
Q _{MAX}	3,7	3,7	3,7	3,7	3,7	3,7
1a	100%	100%	100%	100%	100%	100%
2a	83%	100%	83%	100%	83%	100%
3a	83%	100%	83%	100%	83%	100%
4a	83%	100%	83%	100%	83%	100%
Maximum permissible wind speed v = 49 km/h						

TABLE 04

Main boom + Jib - JIB OFFSET 0° - BOOM 35,8 - OVER FULL RANGE (360°). Outriggers 100% -
Jib length 9,93m - CWT 1500 kg

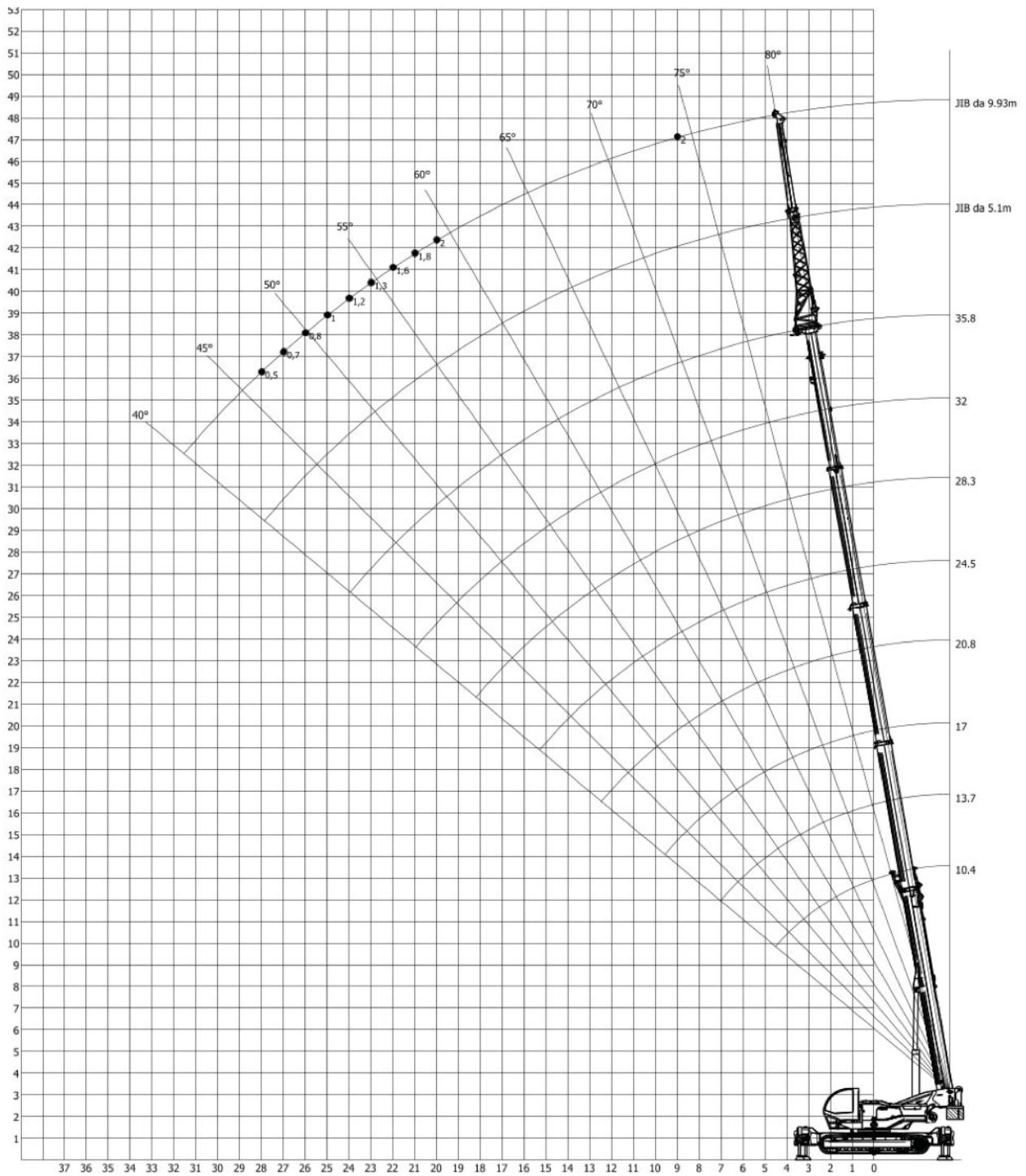


TABLE 04

Main boom + Jib - JIB OFFSET 0° - BOOM 39,5 - OVER FULL RANGE (360°). Outriggers 100% -
Jib length 9,93m - CWT 1500 kg

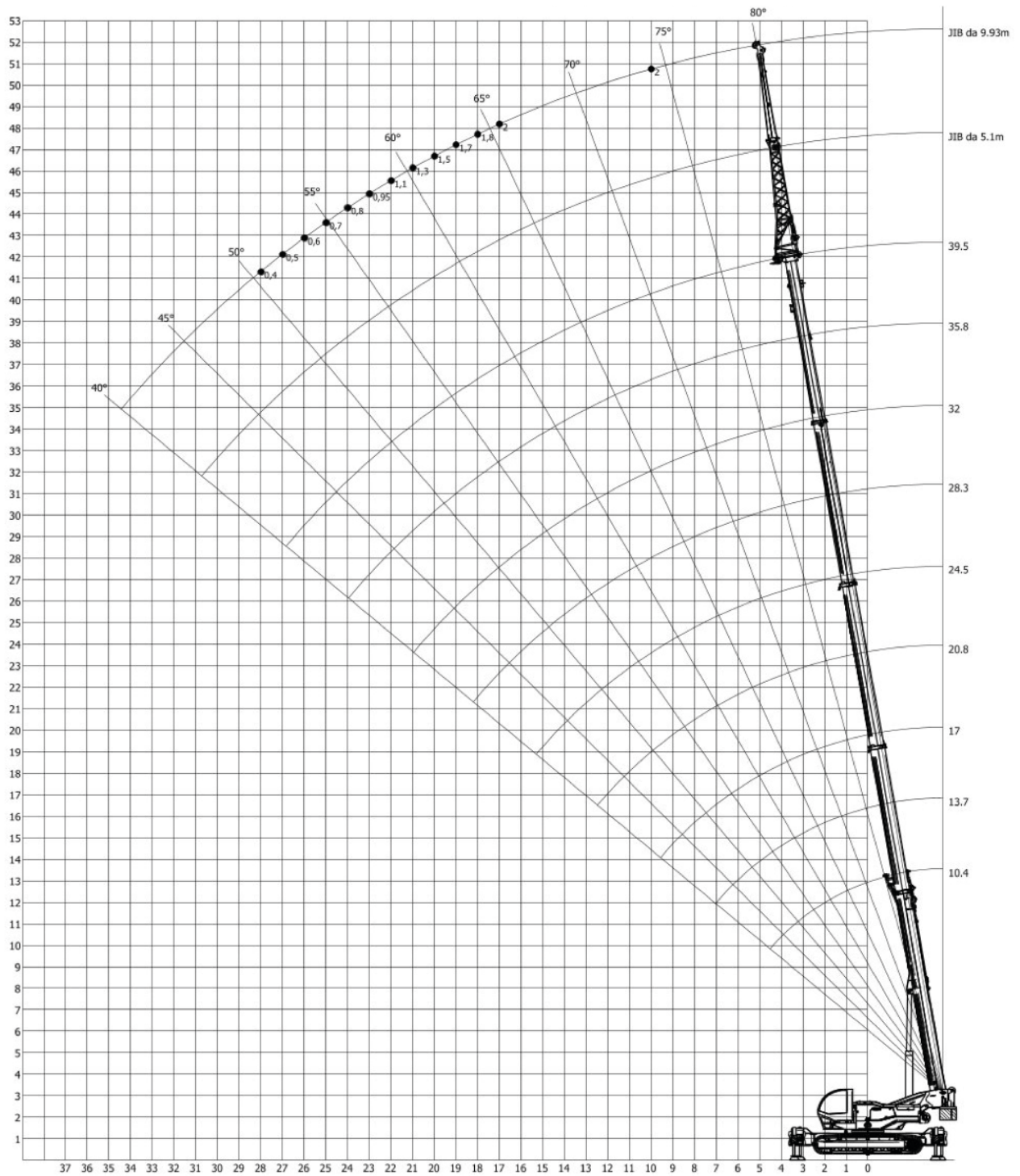


TABLE 04

Main boom + Jib - JIB OFFSET 10° - BOOM 35,8 - OVER FULL RANGE (360°). Outriggers 100% - Jib length 9,93m - CWT 1500 kg

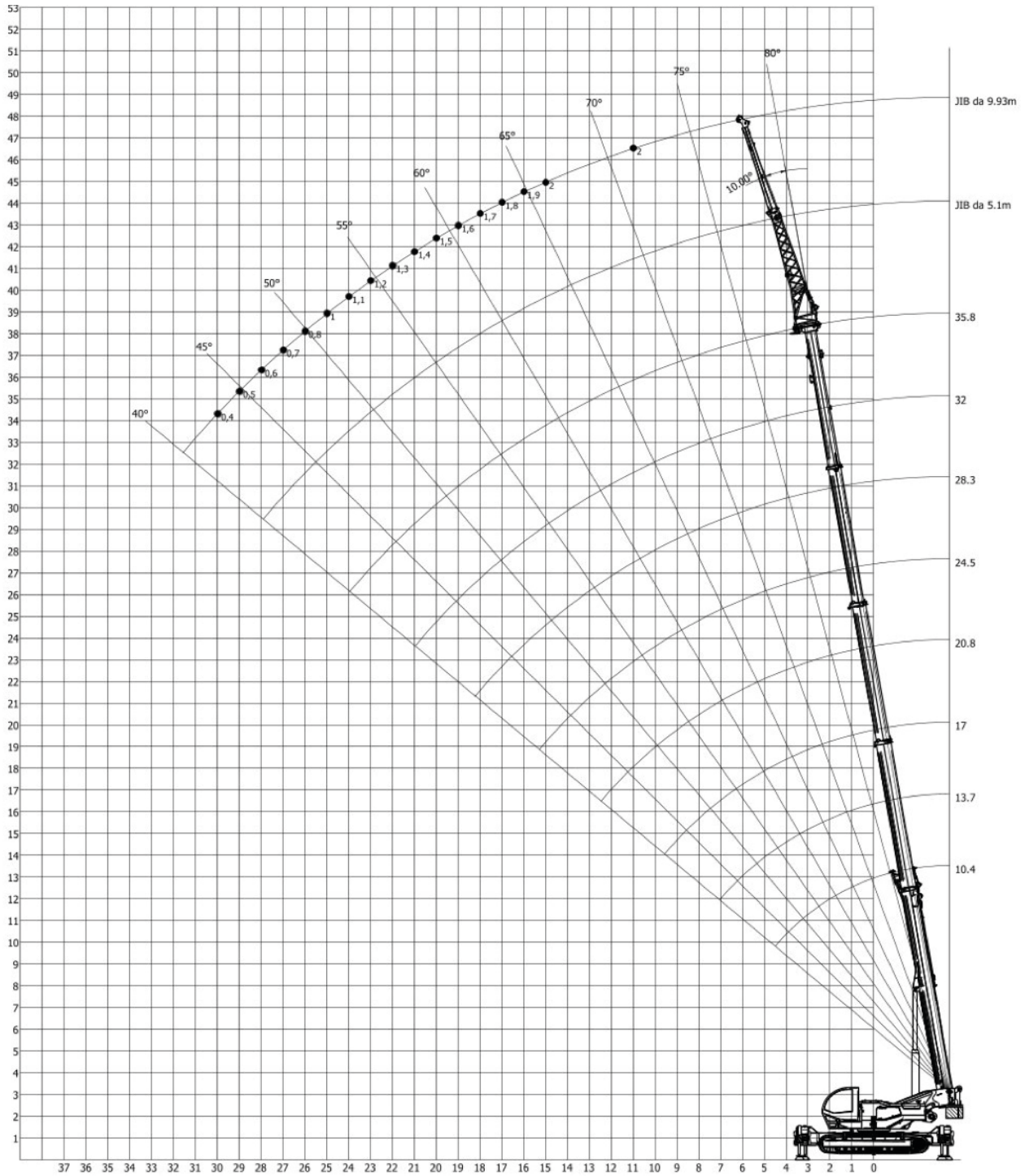


TABLE 04

Main boom + Jib - JIB OFFSET 10° - BOOM 39,5 - OVER FULL RANGE (360°). Outriggers 100% -
Jib length 9,93m - CWT 1500 kg

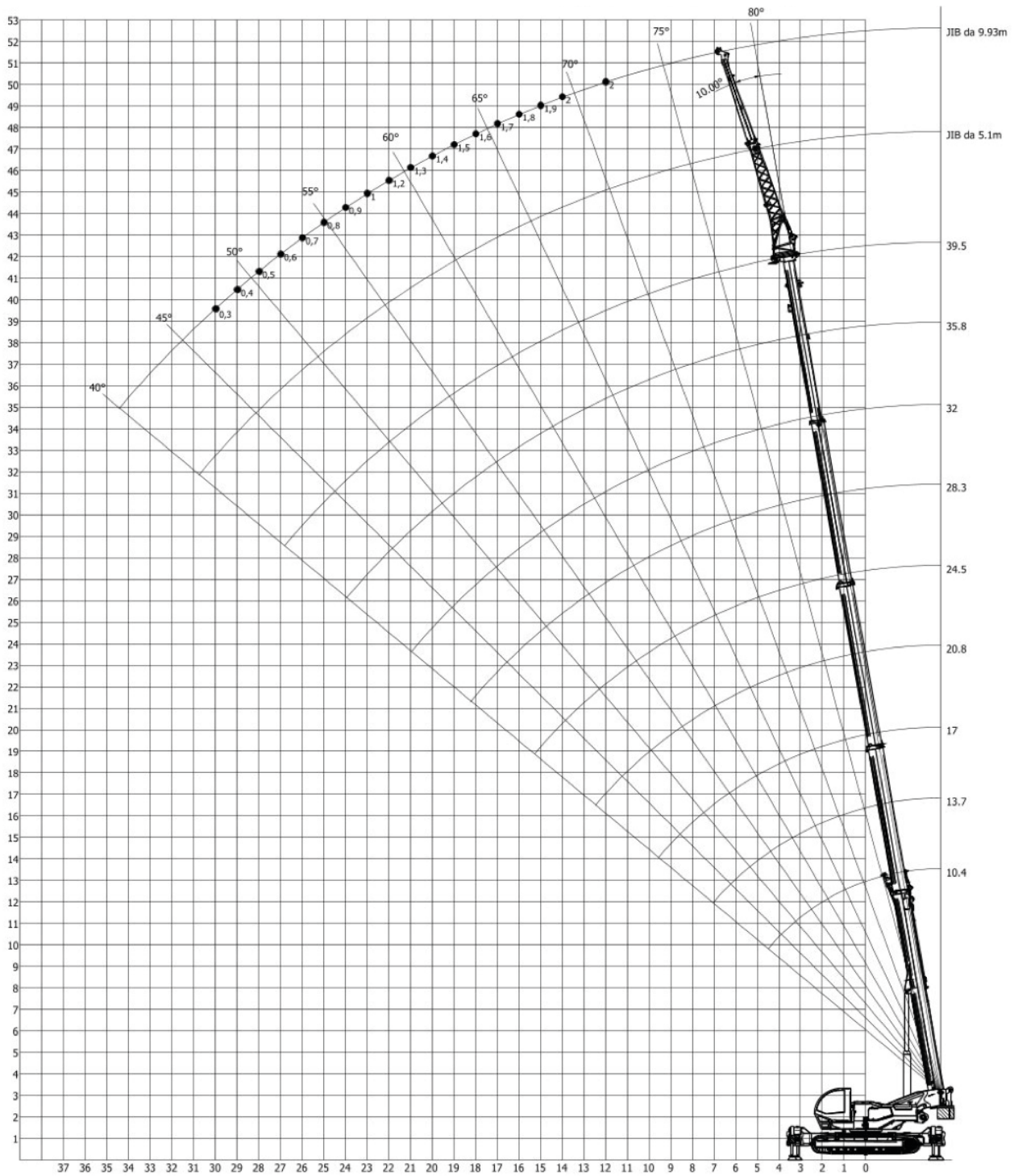


TABLE 04

Main boom + Jib - JIB OFFSET 20° - BOOM 35,8 - OVER FULL RANGE (360°). Outriggers 100% -
Jib length 9,93m - CWT 1500 kg

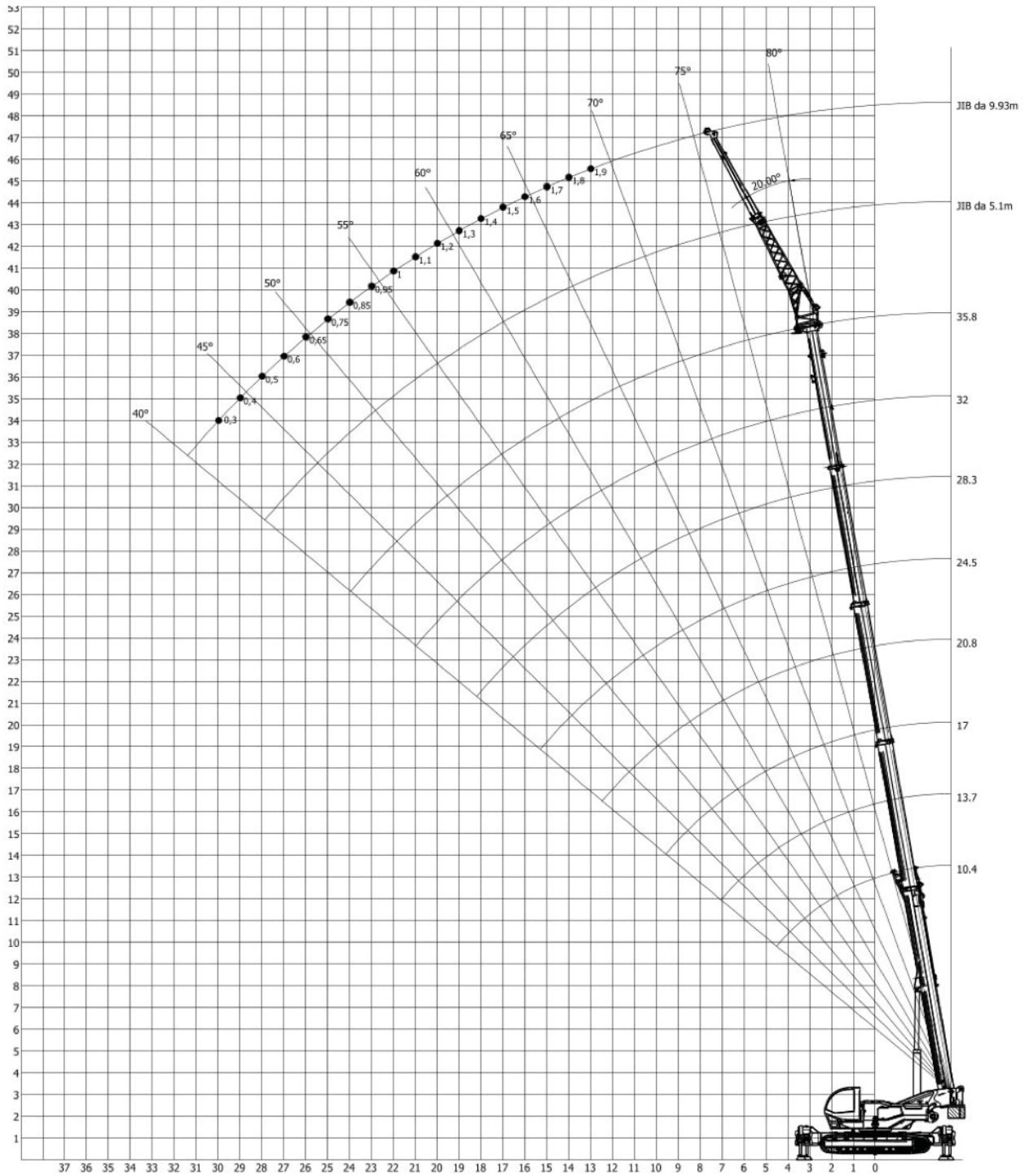


TABLE 04

Main boom + Jib - JIB OFFSET 20° - BOOM 39,5 - OVER FULL RANGE (360°). Outriggers 100% -
Jib length 9,93m - CWT 1500 kg

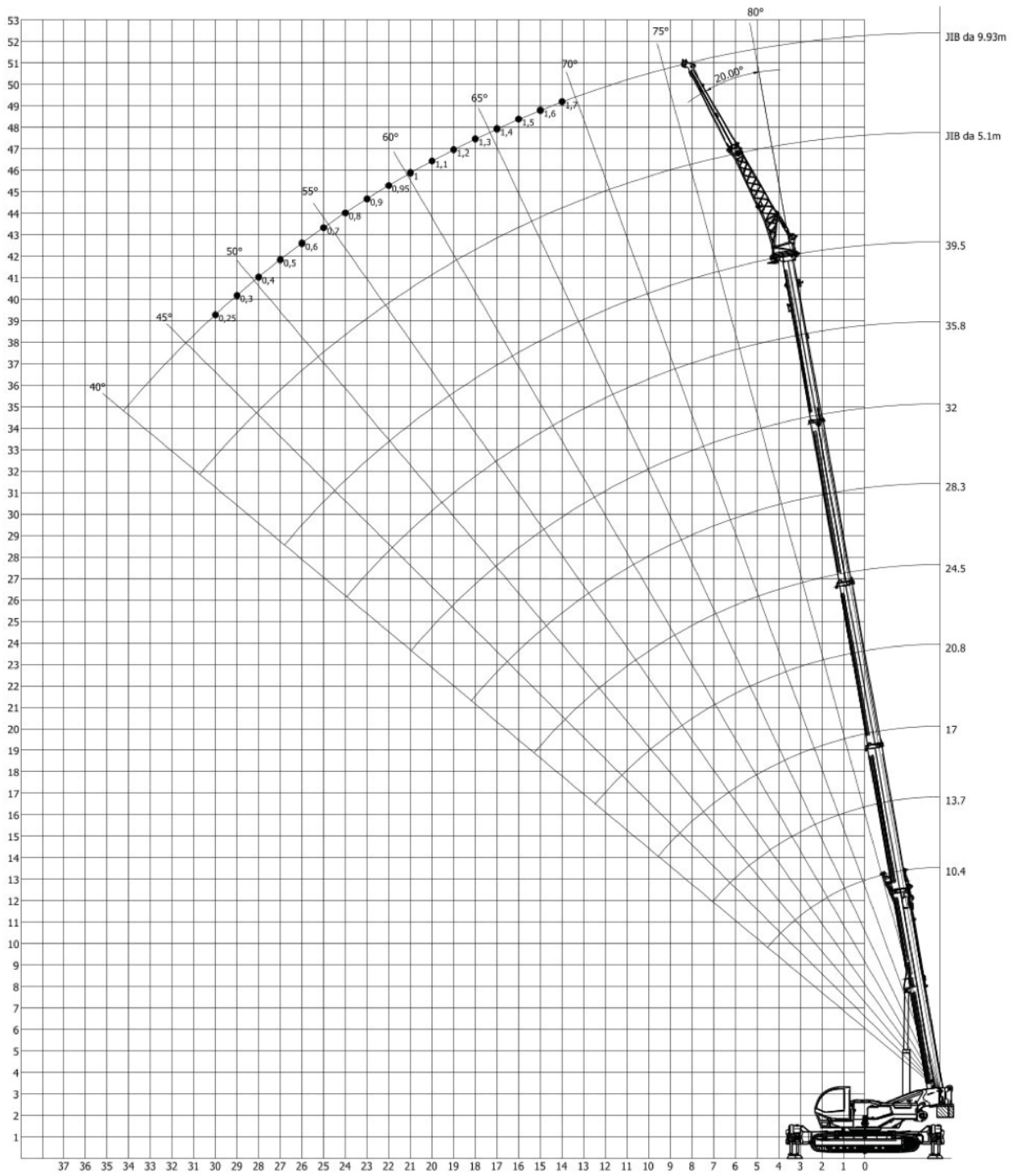


TABLE 05

OVER FULL RANGE 360°. Main boom + Jib - Outriggers 100% - Jib length 11 m - NO CWT

	JIB OFFSET 0°		JIB OFFSET 10°		JIB OFFSET 20°	
RADIUS (m)	BOOM LENGTH					
		39,5	39,5	39,5	39,5	39,5
8,0						
9,0		1.600				
10,0		1.600				
11,0		1.600	1.600		1.600	
12,0		1.600	1.600		1.600	
13,0		1.600	1.600		1.600	
14,0		1.600	1.600		1.600	
15,0		1.600	1.600		1.600	
16,0		1.600	1.600		1.600	
17,0		1.600	1.600		1.600	
18,0		1.300	1.400		1.400	
19,0		1.100	1.200		1.200	
20,0		950	1.000		1.000	
21,0		750	800		900	
22,0		600	600		700	
23,0		450	500		550	
24,0		300	350		400	
25,0			250		300	
26,0						
27,0						
28,0						
29,0						
30,0						
31,0						
Reeving	1	1	1	1	1	1
Q _{MAX}						
1a	100%	100%	100%	100%	100%	100%
2a	83%	100%	100%	100%	100%	100%
3a	83%	100%	100%	100%	100%	100%
4a	83%	100%	100%	100%	100%	100%
Maximum permissible wind speed v = 49 km/h						

TABLE 06

OVER FULL RANGE 360°. Main boom + Jib - Outriggers 100% - Jib length 16 m - NO CWT

	JIB OFFSET 0°		JIB OFFSET 10°		JIB OFFSET 20°	
RADIUS (m)	BOOM LENGTH					
		39,5	39,5	39,5	39,5	39,5
8,0						
9,0						
10,0		1.000				
11,0		1.000				
12,0		800	800			
13,0		800	800	600		
14,0		800	800	600		
15,0		800	800	600		
16,0		800	800	600		
17,0		800	800	500		
18,0		800	700	500		
19,0		700	700	500		
20,0		700	600	500		
21,0		600	600	500		
22,0		600	500	500		
23,0		500	500	500		
24,0		500	400	500		
25,0		400	400	500		
26,0		300	300	400		
27,0		200	200	300		
28,0				200		
29,0						
30,0						
31,0						
Reeving	1	1	1	1	1	1
Q _{MAX}						
1a	100%	100%	100%	100%	100%	100%
2a	83%	100%	100%	100%	100%	100%
3a	83%	100%	100%	100%	100%	100%
4a	83%	100%	100%	100%	100%	100%
Maximum permissible wind speed v = 49 km/h						



OPTIONAL EXTRAS

- 2nd Winch
- Jib extension for 52 m
- Jib extension for 58 m
- Derrick: 1.5 m
- Industry 4.0 kit
- Radio remote control
- 4 Toolboxes
- Tilting cab
- Custom lights
(4 LED headlights + 2 work lights)
- Custom paint finish
- Rubber track pads kit



All data, technical characteristics and information reported in this document are for informational purposes and are subject to change without any prior notice requirement. All specifications described do not constitute a guarantee since the performance of the machine varies depending on use.

Machine illustrations may contain optional and additional equipment. The dimensional data refers to average reference measurements indicated for informational purposes only.

The commissioning of the machine and its correct use require compliance with the use and maintenance manual.

The weights of hooks, blocks and all lifting accessories are part of the load and must be deducted from the loads indicated.

Please contact TeknoGRC for more information regarding optional and additional equipment.

OUR RANGE



TK20



TK30



TK40



TK40 HD



TK45 LS



TK35 T



CG 2040



TKC150-5

Do you need a custom crane? We make machinery on request specific to the customer's needs.
For more information, contact us at the e-mail address info@teknogrc.it



TEKNO GRC s.r.l.

Via Vecchia Fornace, 31
24050 Bariano (BG)

+39 0363 958311
info@teknogrc.it

www.teknogrc.it